



National Gold Medal Award Winner

Jennifer Cirillo, Director

PBC Parks & Recreation Department FY25 Parks Foundation of PBC, Inc. Presentation and Project Selection

PALM BEACH COUNTY PARKS & RECREATION

Department FY2025 Presentation Topics:

- 1. Palm Beach County Parks and Recreation Department overview**
- 2. FY2025 Approved budget and funding sources**
- 3. Needs assessment outcome and potential projects for 2025
Foundation support selection**

PALM BEACH COUNTY PARKS & RECREATION

Organizational Chart

the public



Verdenia C. Baker
County Administrator

Tammy K. Fields
Assistant County
Administrator



National Gold Medal Award Winner

Jennifer Cirillo, Director

PALM BEACH COUNTY PARKS & RECREATION

County-wide Board of County Commissioner Priorities FY2025

- ✓ **Public Safety**
- ✓ **Infrastructure**
- ✓ **Unsheltered Residents**
- ✓ **Housing Development**
- ✓ **Environmental Protection**
- ✓ **Economic Development**
- ✓ **Substance Use & Behavioral Disorders**



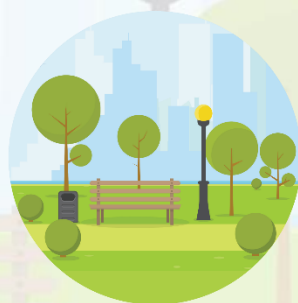
PALM BEACH COUNTY PARKS & RECREATION

Gold Medal
2 time winner
8 time finalist



for Excellence in Parks
and Recreation
Management

**8,668
ACRES**



110 Parks & Facilities

Mission

To provide opportunities for healthy, happy living through award-winning parks, inclusive experiences and environmental stewardship.

Core Services

Ensure access to beaches and water bodies

Facilitate health and wellness opportunities

Provide for youth enrichment, sports/athletic programming and facilities

Promote stewardship of natural, archaeological and cultural sites

Provide for trails, open space and picnic facilities

Vision

As a nationally recognized parks and recreation leader we will connect people and parks by:

- ✓ Engaging all members of our diverse community,
- ✓ Ensuring safe, functional and innovative amenities now and in the future,
- ✓ Continually developing a professional, well-trained staff that is reflective of our community,
- ✓ Being a leader in outdoor recreation tourism,
- ✓ Forming strategic relationships to ensure local access to green and blue spaces,
- ✓ Meeting the national average of park land per capita with a focus on lowering barriers to access; providing environmental equity; advancing economic vitality; and championing community health,
- ✓ Continuously improving service delivery and business practices through the incorporation of new technologies and the creation of enterprising partnerships to deliver desired services.

Core Values

A culture of teamwork

Excellent customer service

Demonstrating a high level of integrity & pride

Fiscally responsible & accountable

PALM BEACH COUNTY PARKS & RECREATION

Parks and Recreation Department Overview Video:



pbcparcs.com

[@pbcparcs](https://www.instagram.com/pbcparcs)

PALM BEACH COUNTY PARKS & RECREATION

**8,668
ACRES**



110 Parks

Note: 11 of these locations are undeveloped future park sites

Department FY2023 Highlights and Accomplishments:

- 1. Overall contribution to economic impact** through Sports Tourism \$10.2M, along with 14,512 room nights and 17 events.
- The Aquatics Division successfully **taught swim lessons** to 979 participants in partnership with the **Drowning Prevention Coalition and Red Cross**. Additionally, 46 students received their **free lifeguard certification** through and innovative pilot program funded by the **Children Services Council** of Palm Beach County.
- 3. Adapted to increased demand for our facilities through innovation and resourcefulness.** Added 38 pickleball courts in the last three years by mostly repurposing older rinks and courts. Harnessed partnerships and secured grants as evidenced by Soccer 5 concession and Orange Bowl field / neighborhood center.

PALM BEACH COUNTY PARKS & RECREATION

**8,668
ACRES**



110 Parks

Note: 11 of these locations are undeveloped future park sites

Department FY2024 Highlights and Accomplishments:

1. **Loxahatchee Battlefield Park was officially listed on the National Register of Historic Places**, a significant collaborative milestone.
2. In collaboration with the Drowning Prevention Coalition of Palm Beach County, the Department **reintroduced the “Schools to Pools”** program at Pioneer Park Aquatic Center, providing vital **water safety education and swim lessons to 175 students, including 40 with special needs.**
3. The Therapeutic Recreation Section hosted its **first Blind Sports Day** in Lake Worth, **promoting inclusion and empowerment through adaptive sports.** The event won a National Association of Counties (NACo) award and offered participants of all abilities the unique experience of playing sports like Beep Baseball and Goalball.



PBC Parks FY25 Priorities and Possible Foundation Project Funding Opportunities

PALM BEACH COUNTY



PARKS & RECREATION

National Gold Medal Award Winner

Jennifer Cirillo, Director

PALM BEACH COUNTY PARKS & RECREATION

**8,668
ACRES**



110 Parks

Note: 11 of these locations are undeveloped future park sites

Department FY2024 Emerging Issues:

1. **Outdated and less modern amenities**, many installed in the early 90's, are increasingly inadequate to meet current public demand and expectation. Combined with the pressures of climate impacts and **emerging recreation and technology trends**, these facilities now require significant capital improvements. The identification of both **short-range and long-range infrastructure funding strategies** is critical to address these ongoing challenges.
2. **Financial and human resources continue to be strained.** These issues are impacting service delivery, the ability to achieve key performance metrics, and delaying construction projects.
3. An **increased lack of civility, escalating disputes among park patrons, and violations of park ordinances** in our public spaces has **emphasized the need to collaborate with law enforcement**, the increased need to procure off-duty resources, further implementation of **crime prevention through environmental design and crowd safety measures**, and **additional training for staff**. The growing popularity of e-bikes has also raised significant safety concerns and conflicts.

PBC Parks & Recreation Focus Areas for FY25

- Sustain quality core service delivery
- Address **infrastructure** w/ short-range and long-range strategies
- Implement additional **safety and security** measures
- Better respond to **heat impacts**
- Provide for a greater sense of **belonging and community connection**
- **CAPRA Accreditation** – best practices and meaningful measurements
- Finalize **long range Dept. master plan** and comprehensive plan updates through 2045
- Continued economic impact development (sports tourism, culture, film, property values, employment, property values, business development, environmental resiliency, etc...)

Possible Parks Foundation Funding Areas

The Parks Foundation of Palm Beach County, Inc. Purpose: To improve the quality of life for all current and future residents of Palm Beach County, Florida, through the encouragement of their use of, and appreciation for and education about, parks, green spaces and recreational areas, and through seeking and accepting funds, bequests and other gifts to further the Corporation's exempt purpose, including without limitation, by providing charitable donations to Palm Beach County, Florida, which funds shall be used by Palm Beach County, Florida for Parks and Recreation purposes.

- Funding options being presented based on our previous conversations.
 - Serve the public.
 - Address a PBC Parks & Recreation need.
 - Consistent with our mission, **vision** and core services.
 - Our Department is budgeted minimally or not at all for the items and needs the support of funders to make the vision a reality.
 - Attainable per our previous conversation:
 - ~\$50,000 first year
 - ~\$100,000 year two

Anticipated Funding Opportunities 2024-2026 for Parks Foundation of PBC consideration

Items Specific to FY25

Annual Focus Areas (heat, safety, accreditation, planning, etc.)

- **Shade canopies** for more playgrounds and courts
- Fund **tree planting project** in BASCRP
- Outdoor **AED stations**
- Help sponsor **CAPRA accreditation** team visitation in 2025

Park Access & Belonging

- Playground enhancement; **communication boards** and nicer elements
- **Teen vocational training in parks** & recreation field (sponsor Nature Ninja Warriors program)
- **Additional beach access mats**
- Establish fund for field trip transportation
- **Strategic land acquisition** to address park deserts

Environment, Historic and Cultural Resource Preservation

- Grant pass-through for historic/cultural/environmental facility improvements, exhibits & signage
- Historic artifact collection acquisition (Peanut Island)
- Additional scientific & archeological research support

Art in Parks

- **Story Walk funding** – literacy and fitness
- Community or Neighborhood Park **mural or art installation** in each of the seven Commission districts
- **“You Belong Here”** themed and inclusionary promotional items for the public.
- Grant pass-through

Anticipated Funding Opportunities 2024-2026 for Parks Foundation of PBC consideration

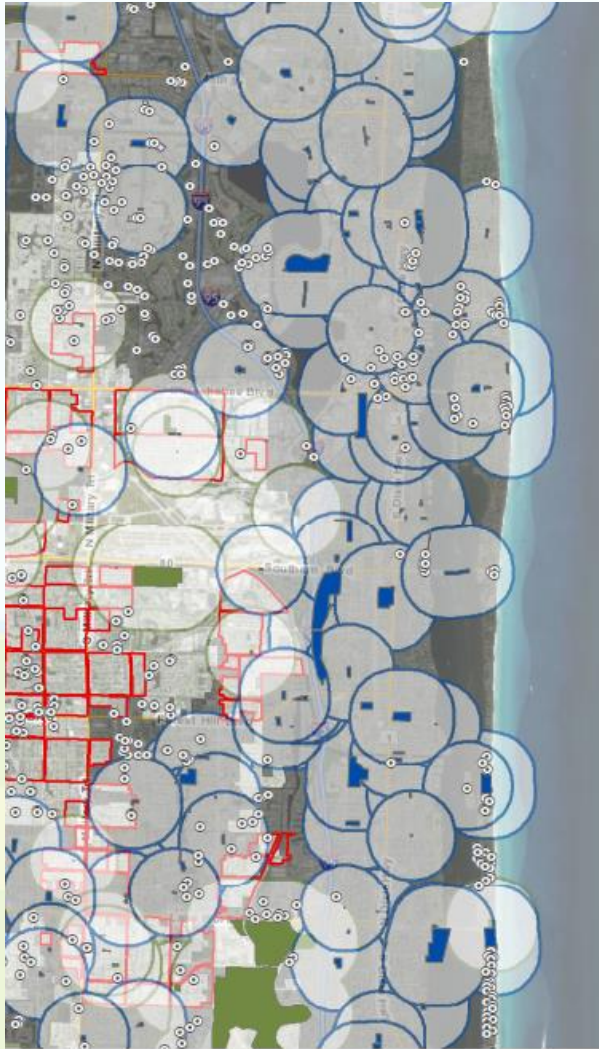
Items Specific to FY25

Annual Focus Areas (heat, safety, accreditation, planning, etc.)

- **Shade canopies** for more playgrounds and courts
- Fund **tree planting project** in BASCRP
- Outdoor **AED stations**
- Help sponsor **CAPRA accreditation** team visitation in 2025

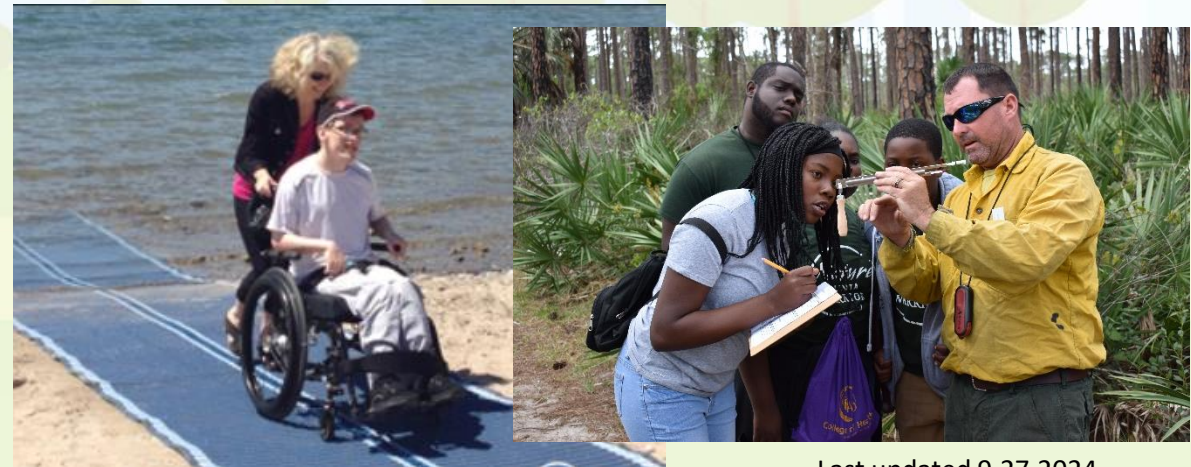


Anticipated Funding Opportunities 2024-2026 for Parks Foundation of PBC consideration



Park Access & Belonging

- Playground enhancement; **communication boards** and nicer elements
- **Teen vocational training in parks & recreation** field (sponsor Nature Ninja Warriors program)
- **Additional beach access mats**
- Establish fund for field trip transportation
- **Strategic land acquisition** to address park deserts



Anticipated Funding Opportunities 2024-2026 for Parks Foundation of PBC consideration



Environment, Historic and Cultural Resource Preservation

- Grant pass-through for historic/cultural/environmental facility improvements, exhibits & signage
- Historic artifact collection acquisition (Peanut Island)
- Additional scientific & archeological research support



Anticipated Funding Opportunities 2024-2026 for Parks Foundation of PBC consideration



Art in Parks

- **Story Walk funding** – literacy and fitness
- Community or Neighborhood Park **mural or art installation** in each of the seven Commission districts
- **“You Belong Here”** themed and inclusionary promotional items for the public.
- Grant pass-through

Estimated Price Sheet for Parks Foundation of PBC, Inc. project selection consideration

Items Specific to FY25

Annual Focus Areas (heat, safety, accreditation, planning, etc.)

- **Shade canopies** for more playgrounds and courts **\$75K+ ea.**
- Fund **tree planting project** in BASCRP **\$5K+**
- Outdoor **AED stations** **~\$91K for 14 location pilot project +**
- Help sponsor **CAPRA accreditation** team visitation in 2025 **\$5K scalable**

Park Access & Belonging

- Playground enhancement; **117 to go communication boards** and nicer elements **\$1,850 ea.**
- **Teen vocational training in parks & recreation** field (sponsor Nature Ninja Warriors program) **\$1K+**
- **Additional beach access mats** **\$3,500+ ea.**
- Establish fund for field trip transportation **~\$2,800 ea.**
- **Strategic land acquisition** to address park deserts **\$M master plan scalable**

Environment, Historic and Cultural Resource Preservation

- Grant pass-through for historic/cultural/environmental facility improvements, exhibits & signage **\$any - scalable**
- Historic artifact collection acquisition (Peanut Island) **~\$10K++**
- Additional scientific & archeological research support **\$any - scalable**

Art in Parks

- **Story Walk funding** – literacy and fitness **~\$5K**
- Community or Neighborhood Park **mural or art installation** in each of the seven Commission districts **\$40K+ ea.**
- **“You Belong Here”** themed and inclusionary promotional items for the public. **\$any - scalable**
- Grant pass-through

PALM BEACH COUNTY PARKS & RECREATION

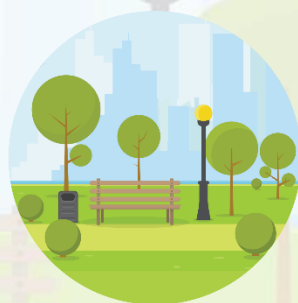
Gold Medal

2 time winner
8 time finalist



for Excellence in Parks
and Recreation
Management

**8,668
ACRES**



110 Parks

Note: 11 of these locations are undeveloped future park sites

